

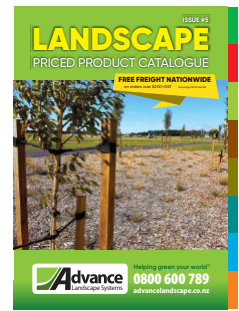
Advance

Landscape Systems

Green your world™



EARTH FRIENDLY
PRODUCT



Download our latest
Priced Product Catalogue
from our website



FiberGuard™

100% Biodegradable Seedling Guard



100% Biodegradable Seedling Guard

Designed and created in NZ from natural pulp-fibre and coated with a durable food safe moisture barrier.

- Protects plants naturally against browsing animals, herbicide sprays and harsh elements.
- Provides its own micro-climate to help plants survive and enhance growth.
- Manufactured using a tough recycled fibre board that has excellent puncture resistant properties and high bursting strength.
- High 'Wet Strength' due to its FDA compliant moisture barrier helping it withstand damp environments.
- Fast and secure install with its innovative tab and slot design. Has two unique stake ports to ensure guards are locked in place and stable in the wind.
- Sloped design for easy placement on hillsides where necessary.
- Neutral colour creates aesthetically pleasing landscapes.
- Removal of guards not necessary as they biodegrade down to mulch, however they can be removed or recycled if desired.
- Provides good protection in the field for up to 24 months. The rate of degradation is dependent on climate and site conditions.



FiberGuard 300

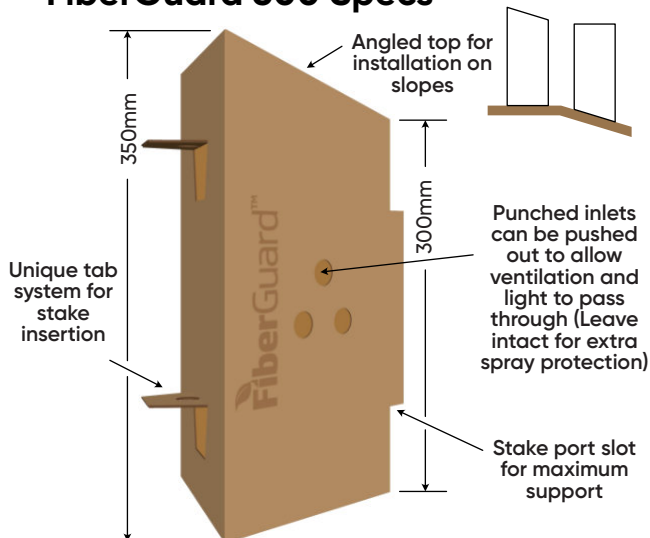
Ideal for large scale reveg plantings. Protects against **rabbits**. Recommended stake length 50cm.



FiberGuard 450

Ideal for larger shrubby plants. Protects against both **hares** and **rabbits**. Recommended stake length 75cm.

FiberGuard 300 Specs



Assembly & Installation Guide



Take FiberGuard board and fold along creases.



Form into triangle shape with the 'clipped corners' edge on the outside.



Push tabs out from inside, ready to insert the stake through tab ports.



Thread stake through both tab ports.



Push in stake ports top and bottom on opposite corner and insert second stake.



Your FiberGuard is ready to be placed over your plant with the stakes driven in with a mallet.