

DekGrip™ Anti-Slip Mesh

MEETS SLIP
RESISTANCE
CLASSIFICATION
AS 4586-2013

DekGrip anti-slip mesh overlay is designed for attaching to the surface of exterior wooden walkways, bridges, decks and viewing platforms.

Applications

- Wooden surfaced boardwalks
- Wooden surfaced bridges
- Viewing platforms
- Exterior decking
- Marine accessways

Features/Benefits

- Providing safe all-weather grip
- Ideal for all public areas
- Manufactured from UV stabilised polypropylene
- Designed to withstand New Zealand's tough environmental conditions
- DekGrip is easy to handle and install
- Internal diameter of the squares are approx 34mm
- Will not harbour mould or fungi
- Economical plastic construction avoids rusting issues and potentially sharp edges
- Can be trimmed to size with heavy scissors, snips or secateurs
- Available in three different sizes, custom widths available on indent

Specifications

Material	Polypropylene Biaxial Geogrid (TGSG30-30)
Color	Black
Treatment	UV Resistant - 2% UV inhibitor (HTUV100-Germany)
Application	Anti-slip surface overlay for all wooden-surfaced boardwalks, decks, bridges and marine accessways.

Code	Description	Pack Qty
23302	0.90m x 10m	1 Roll
26251	1.90m x 50m	1 Roll
26252	3.90m x 50m	1 Roll

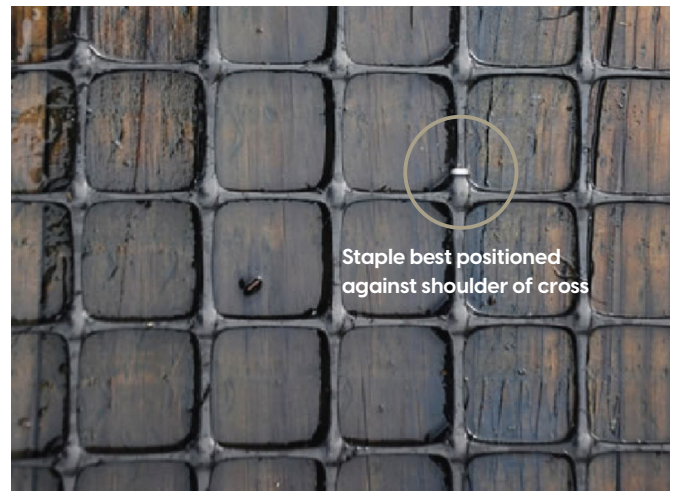
PLEASE NOTE: Roll widths less than 3.95m are custom cut and edges may require trimming back to the outside longitudinal strand before installation.



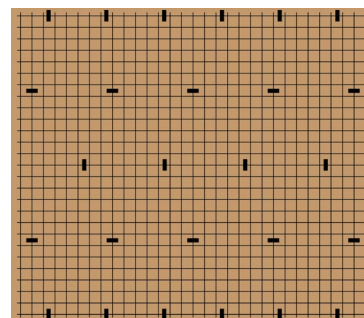


Technical Characteristics

Test Conducted	Test Results
Longitudinal Tensile Strength	≥30 kN/m
Transverse Tensile Strength	≥30 kN/m
Longitudinal Elongation	≤15%
Transverse Elongation	≤15%
Longitudinal Strength at 2% Strain	≥10.5 kN/m
Transverse Strength at 2% Strain	≥10.5 kN/m
Longitudinal Strength at 2% Strain	≥21 kN/m
Transverse Strength at 2% Strain	≥21 kN/m



Geometrics	Longitudinal	Transverse	General
Rib-Pitch	35 mm	40 mm	
Mid-Rib Depth	3 mm	2 mm	
Mid-Rib Width	2.5 mm	3 mm	
Nodal Thickness			4.5 mm
Rib Shape	Rectangular		



Recommended maximum stapling distance 15cm at edges and 20cm internally.
NB: Butt mesh when joining - do not overlap

Installation Tool Options

Power Stapler
 Ideal for larger installations.



Manual HD Stapler
 Economical option for smaller jobs.



For more info or questions contact our friendly team

0800 600 789

sales@advancelandscape.co.nz
 www.advancelandscape.co.nz

